

What can I put in my black bin?

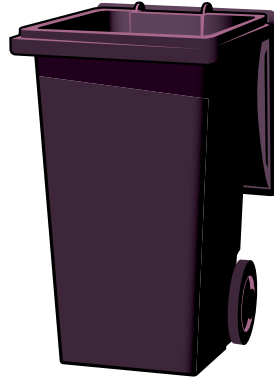
Please use your black wheeled bin for your fortnightly rubbish that cannot be recycled.

non-recyclables

The following items **cannot** be collected, but can be taken to your local Household Waste Recycling Centre (see overleaf for details).

X NO Thanks

- Electrical appliances
- Tyres
- Gas bottles
- Fire extinguishers
- Flammable liquids
- Hazardous waste
- Liquid waste
- Soil
- Hot ashes
- D.I.Y. waste
- Paint tins
- Bulky & heavy items*
- Hypodermic needles*
- Clinical waste*



*Tonbridge & Malling Borough Council provides a special collection service for these items. Please email us at waste.services@tmbc.gov.uk or contact us on 01732 876147

Aylesford Newsprint

Green Box Competition

We have teamed up with Aylesford Newsprint to reward regular users of the green box service.

The more often you use your green box to recycle your paper and cans, the more chance you have of winning a subscription to your favourite magazine!

Each month starting from November, two lucky households will be selected at random and will receive a magazine subscription voucher worth £30, as well as an invitation to take a tour of Aylesford Newsprint's state of the art paper mill.

So don't delay – get recycling today!

This competition is not open to staff or councillors of Tonbridge & Malling Borough Council or staff of Veolia and their immediate families. A full list of rules is available on request and can be found on our website at www.tmbc.gov.uk/waste



November 2012					December 2012					January 2013					February 2013				
Mo	Tu	We	Th	Fr	Mo	Tu	We	Th	Fr	Mo	Tu	We	Th	Fr	Mo	Tu	We	Th	Fr
			1	2	3	4	5	6	7	7	8	9	10	11	4	5	6	7	8
5	6	7	8	9	10	11	12	13	14	14	15	16	17	18	11	12	13	14	15
12	13	14	15	16	17	18	19	20	21	21	22	23	24	25	18	19	20	21	22
19	20	21	22	23	24	25	26	27	28	28	29	30	31		25	26	27	28	
26	27	28	29	30	31														

March 2013					April 2013					May 2013					June 2013				
Mo	Tu	We	Th	Fr	Mo	Tu	We	Th	Fr	Mo	Tu	We	Th	Fr	Mo	Tu	We	Th	Fr
				1	1	2	3	4	5	6	7	8	9	10	3	4	5	6	7
4	5	6	7	8	8	9	10	11	12	13	14	15	16	17	10	11	12	13	14
11	12	13	14	15	15	16	17	18	19	20	21	22	23	24	17	18	19	20	21
18	19	20	21	22	22	23	24	25	26	27	28	29	30	31	24	25	26	27	28
25	26	27	28	29	29	30													

July 2013					August 2013					September 2013					October 2013				
Mo	Tu	We	Th	Fr	Mo	Tu	We	Th	Fr	Mo	Tu	We	Th	Fr	Mo	Tu	We	Th	Fr
1	2	3	4	5				1	2	2	3	4	5	6		1	2	3	4
8	9	10	11	12	5	6	7	8	9	9	10	11	12	13	7	8	9	10	11
15	16	17	18	19	12	13	14	15	16	16	17	18	19	20	14	15	16	17	18
22	23	24	25	26	19	20	21	22	23	23	24	25	26	27	21	22	23	24	25
29	30	31			26	27	28	29	30	30					28	29	30	31	

Key:

■ Green box/green-lidded bin collections ■ Black bin collections ■ No Collections

CHRISTMAS WEEK: Collections due on Mon 24 December will take place as normal. All other collections that week will take place one day later than normal, with collections due on Tue 25 December taking place on Wed 26 December (Boxing Day) and those due on Fri 28 December taking place on Sat 29 December.

NEW YEAR WEEK: Collections due on Mon 31 December will take place as normal. All other collections that week will take place one day later than normal, with collections due on Tue 1 January taking place on Wed 2 January and those due on Fri 4 January taking place on Sat 5 January.

EASTER: There will be no collections on Good Friday or Easter Monday. Collections due on Fri 29 March will take place on Sat 30 March. All collections due in w/c 1 April will take place one day later than normal with collections due on Fri 5 April taking place on Sat 6 April.

MAY & AUGUST: There will be no change to your collection days.

Contact us:

If you need any help with your refuse collections or containers, or need this leaflet in a different format, please contact us:

- website: www.tmbc.gov.uk/waste
- email: waste.services@tmbc.gov.uk
- phone: 01732 876147

Recycling Calendar & Guide to Kerbside Collection Services



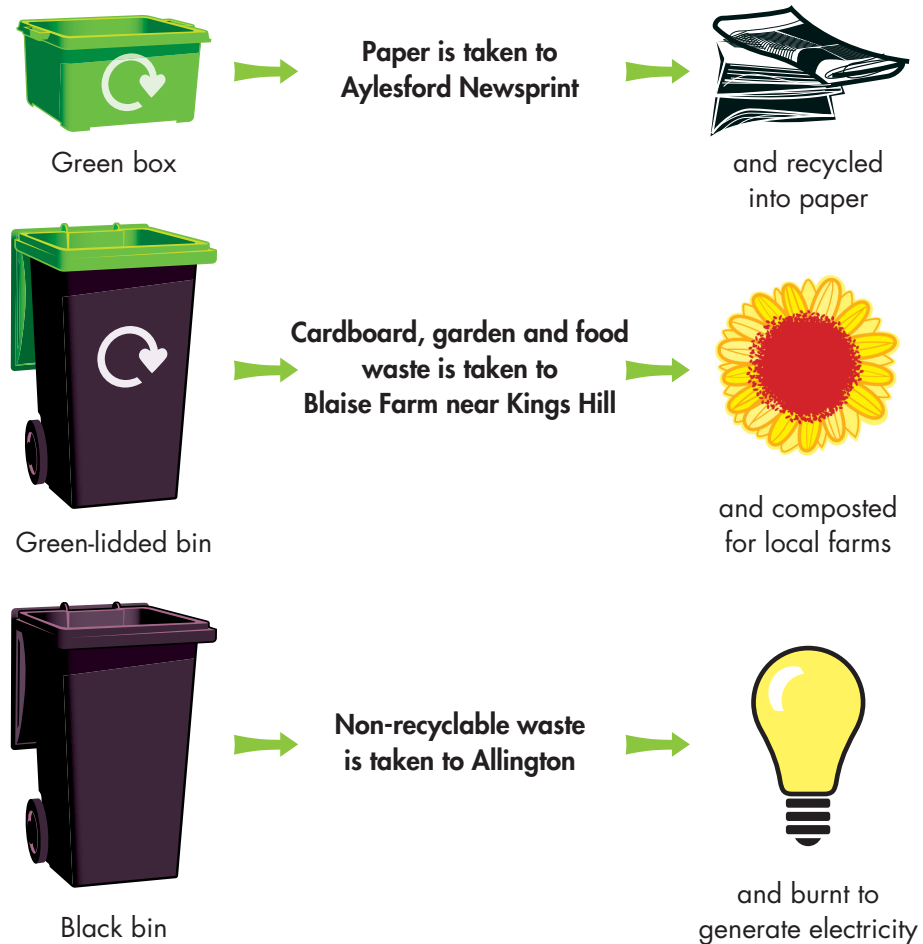
recycle
for Tonbridge & Malling



Your local recycling services




Over 90% of your waste is now made use of through recycling, composting or burning to create energy from waste.

Remarkably, over 80% of your waste is actually made use of in the borough rather than being transported large distances. This is due to the world class facilities at Blaise Farm, Aylesford Newsprint and the Waste to Energy Plant at Allington - all within the borough. Achieving high recycling and composting rates and using black bin waste to create electricity, all within the borough, helps reduce your carbon footprint. It also means that your refuse and recycling service is one of the most sustainable in the country.



What can I recycle in my green-lidded bin?

✓ YES Please

	cardboard	<ul style="list-style-type: none"> Corrugated cardboard Flat grey cardboard (eg cereal boxes, shoe boxes, toilet roll tubes) 	<ul style="list-style-type: none"> Shiny cardboard (ready meal packaging) Plain greetings cards
	garden waste	<ul style="list-style-type: none"> Grass cuttings Hedge clippings Flowers Pruning 	<ul style="list-style-type: none"> Thorny branches Weeds Pinecones Fruit
	food waste	<ul style="list-style-type: none"> Dairy (eggs, cheese etc) Tea bags & coffee grounds Fruit & vegetables (raw & cooked) 	<ul style="list-style-type: none"> Meat & bones Fish Bread, cakes & pastries Rice, pasta & beans Plate scrapings

Food waste tips

Wrapping food waste will help keep your green-lidded bin clean and tidy and reduce any smells. Many householders simply wrap their food waste in newspaper like 'fish 'n' chips', or you could use a paper bag, and place it directly in the green-lidded bin. You may choose to use a kitchen caddy, or old ice cream tub, for food waste. This can then be easily stored in your kitchen. Please do not use plastic bags including compostable, biodegradable plastic or corn starch bags.




What happens to my food waste once collected?

Once we have collected your garden, food and cardboard waste from the green-lidded bin it is taken to a special facility, such as Blaise Farm near Kings Hill.

As the organic waste breaks down, the temperature is carefully controlled to ensure that the finished product is completely sterile. The end product will be used for horticultural purposes, for example for helping to grow Kentish lettuces, and for restoration of landfill and industrial sites.

What can I recycle in my green box?

✓ YES Please

	newspapers & magazines	<ul style="list-style-type: none"> Newspapers Magazines Telephone directories Yellow pages White envelopes 	<ul style="list-style-type: none"> Catalogues Junk mail Plain shredded paper
	telephone directories		
	food tins & drink cans	<ul style="list-style-type: none"> Clean food tins Clean drink cans 	<ul style="list-style-type: none"> Clean foil EMPTY aerosol cans

Recycling banks and centres



plastic bottles

There are recycling banks at over 50 locations throughout Tonbridge and Malling where you can take your plastic bottles, glass, cans, newspapers, magazines, cardboard, textiles, clothes, shoes, books and CDs.



glass bottles & jars

For more information on recycling bank locations near you visit www.tmbc.gov.uk



food tins & drink cans

You can also recycle at your local Household Waste Recycling Centre.



paper

For more information about your local Household Waste Recycling Centre call **Kent County Council** on **0845 345 0210** or visit www.kent.gov.uk/recycleforkent



mixed textiles & clothes



books



tapes and discs

